



INDIAN NOTICES TO MARINERS



EDITION NO. 01 DATED 01 JAN 2016

(CONTAINS NOTICES 031 TO 038)

NATIONAL HYDROGRAPHIC OFFICE WISHES ALL MARINERS A HAPPY NEW YEAR 2016

REACH US 24 x 7



inho-navy@nic.in
msis-inho-navy@nic.in



+91-135-2748373



National Hydrographic Office
107-A, Rajpur Road
Dehradun – 248001
INDIA



Joint Director of Hydrography
Maritime Safety Information Services
+91- 135 - 2747360-65



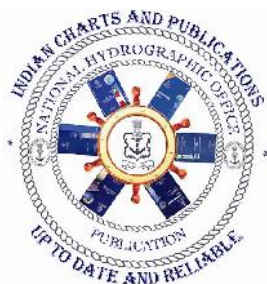
www.hydrobharat.gov.in

CONTENTS

<u>Section No.</u>	<u>Title</u>
I	List of Charts Affected
II	Permanent Notices
III	Temporary and Preliminary Notices
IV	Marine Information
V	NAVAREA VIII Warnings in force
VI	Corrections to Sailing Directions
VII	Corrections to List of Lights
VIII	Corrections to List of Radio Signals
IX	Reporting of Navigational Dangers

(PUBLISHED ON NHO WEBSITE ON 1ST & 16TH OF EVERY MONTH)

FEEDBACK: msis-inho-navy@nic.in



INSIST ON INDIAN CHARTS AND
PUBLICATIONS
Original, Authentic and Up-to-Date



© Govt. of India Copyright

No permission is required to make copies of these Notices. However, such copies are not to be commercially sold.

II

MARINER'S OBLIGATION AND A CHART MAKER'S PLEA

Observing changes at sea proactively and reporting them promptly to the concerned charting agency, is an obligation that all mariners owe to the entire maritime community towards SOLAS. Mariners are requested to notify the Chief Hydrographer to the Government of India at the above mentioned address/fax number/ E mail address immediately on discovering new or suspected dangers to navigation, changes/defects pertaining to navigational aids, and shortcomings in Indian charts/publications. The Hydrographic Note [Form IH – 102] is a convenient form to notify such changes. Specimen form is attached at Section IX with this notice. Also visit our website for downloading and filling up instructions for Hydrographic Note.

**Chief Hydrographer
to the Government of India**

WARNING AGAINST USE OF COUNTERFEIT PRODUCTS

All mariners are cautioned against the use of counterfeit copies of IN Charts and publications. Navigational Charts produced after 31 Oct 14 carry NHO crest as watermark on the reverse with backslip. Chart Agent's stamp is mandatory on all Charts.

Counterfeit products may have errors resulting in potential risks. The same are not approved by inspecting agencies and do not satisfy the carriage requirements of SOLAS chapter V.

Mariners are strongly advised not to use or encourage the use of counterfeit charts and publications. Failure to comply with the warning may invite legal action.

III

EXPLANATORY NOTES

Corrections to Charts and Publications. Section I comprises List of Charts affected by the notices contained in this edition. Whereas sections II and III contain information for correcting the charts and publications. Mariners should insist on corrected charts from their chart distributors/agents.

- (a) Geographical positions given are in the horizontal datum of the current edition of the chart, unless otherwise stated.
- (b) Bearings are true, reckoned clockwise from 000° to 359°. Bearings to lights are from seaward.
- (c) Symbols referred to, are those shown on the chart 5020 (INT 1).
- (d) Alterations to depth contours, deletion of depths to make way for new detail, etc; are not normally mentioned, unless they have some navigational significance.
- (e) Blocks and notes, if any, accompanying the Notices in Sections II and III are placed after Section IX.

Temporary and Preliminary Notices. These are indicated by (T) and (P) respectively after the Notice number and are placed in Section III. SI Nos. of those in force are published quarterly on 01 Jan, 01 Apr, 01 Jul and 01 Oct, and their text is published in Annual Edition of Indian Notices to Mariners. They should be inserted in pencil, by the user, on receipt.

Source of Information. A star preceding the number of a Notice indicates that the notice is promulgated by INHO based on original information received.

Sailing Directions. Corrections for the Sailing Directions (Pilots) are given in Section VI.

Lights. Corrections to Indian List of Lights are given in Section VII, where affected Light List number is quoted.

- (a) These corrections should be incorporated as per instructions given on page XI of the List of Lights.
- (b) Such correction notices to list of lights may be published in either an earlier or a later Edition of N to M than the Edition containing the Notice to the chart correction.
- (c) The range of a light given is its nominal range. Its geographical range is given in parenthesis only if it is less than the nominal range.
- (d) A star indicates that the corresponding field is to be amended and all stars indicate that new light is to be inserted.

Radio Signals. The corrections in Section VIII should be cut and pasted in the appropriate volume of the List of Radio Signals.

Radio Navigational Warnings.

- (a) These are broadcast as serially numbered NAVAREA warnings by the concerned NAVAREA coordinator through GMDSS and Area Radio Broadcasts.
- (b) They contain important information affecting navigational safety, which cannot await the publication of the next edition of N to M.
- (c) It should be borne in mind that they may be based on reports which cannot always be verified before promulgation.
- (d) It is therefore necessary to be selective, and promulgate only the more important warnings to avoid overloading users; the less important information is included in the forthcoming edition of N to M or the Chart/publication concerned.

IV

Laws and Regulations. While in the interest of the safety of shipping, the Hydrographic Office makes every endeavor to include in its publications details of the laws and regulations of all countries pertaining to navigation, it must be clearly understood: -

- (a) That no liability whatsoever can be accepted for failure to publish details of any particular law or regulation and
- (b) That publication of details of a law or regulation is solely for the safety and convenience of shipping and implies no recognition of the International validity of the law or regulation.

Correction of Charts and Publications by the Users. Notices to Mariners contain important information concerning safety of navigation at sea, hence, they should be used to keep the specified charts and publications up-to-date.

Reliance on Charts and Associated Publications. While every effort is made by the Hydrographic Office to ensure the accuracy of the information on Charts and Publications before they are published, it should be appreciated that it may not always be complete and up-to-date. The mariner must be the final judge for the reliance he can place on the information available, bearing in mind his particular circumstances, local pilotage guidance and judicious use of available navigational aids.

Use of Global Positioning System (WGS 84) positions.

- (a) The positions of hydrographic objects shown on some of the Indian charts and publications are in Everest datum. However, the positions of vessels obtained from Global Positioning System (GPS) are on World Geodetic System 1984 datum. There will always exist a difference in the position values obtained by visual fixing (Everest Datum) and GPS position (WGS 84 datum).
- (b) Wherever these differences have been ascertained, their average values are published as a Cautionary Note on the chart concerned, as shifts in Latitude and Longitude. Whilst plotting GPS positions on charts, the shift values as given on the chart must be applied, before making any assessment of the navigational situation vis-à-vis the other charted information.
- (c) These datum shift values are not uniform, particularly in areas off Andaman and Nicobar and Lakshadweep Islands, as these places are not linked to mainland network (Everest datum). Mariners are advised to use alternate source of position information such as Visual or Radar, particularly when closing the shore or navigating in the vicinity of dangers.

Source Data on Charts. All Indian charts contain specific information on their source of hydrographic data. In areas where the source data is very old, incomplete and less reliable, the mariner must use such charts with prudence. Mariner should always use the largest scale charts available for the area. Apart from being the most detailed, the larger scale charts are usually corrected first. Hydrographic information may be sparse on small scale charts. On such charts, a charted shoal may be in error as regards position, least depth and extent. Uncharted dangers may also exist, particularly in areas away from well-established routes. Mariners must exercise due caution.

Further Guidance. The Mariner's Hand Book (NP 100) gives full explanation on the use of charts and the type of information contained on charts. In their own interest, all users of charts should refer to it.

NEWLY PUBLISHED INDIAN CHARTS, ENC_s AND PUBLICATION

1. The new Indian Charts that are available for mariners in the market is as follows:-

<i>Chart No.</i>	<i>Date of Publication</i>	<i>Title, Limits & Description</i>	<i>Scale</i>	<i>Folio</i>	<i>Price</i>
2007	15-12-2015	ANDROTH ISLAND <u>Limits</u> 10° 45'.50N; 73° 33'.00E. 10° 55'.90N; 73° 49'.15E.	30,000	4	Rs. 1870.00
2121	15-12-2015	VERAVAL ANCHORAGE <u>Limits</u> 20° 49'.50N; 70° 17'.00E. 20° 56'.50N; 70° 25'.90E.	25,000	2	Rs. 1870.00
		VERAVAL HARBOUR <u>Limits</u> 20° 52'.40N; 70° 20'.60E. 20° 54'.80N; 70° 24'.25E.	10,000		
3002 (INT 7410)	15-12-2015	APPROACHES TO VISAKHAPATNAM <u>Limits</u> 17° 27'.50N; 83° 09'.75E. 17° 48'.00N; 83° 43'.25E.	60,000	5	Rs. 1870.00

2. The Indian Charts permanently withdrawn are as follows:-

<i>Chart No.</i>	<i>Date of Publication</i>	<i>Title</i>	<i>On Publication of New Chart/ Edition</i>	<i>Date of Publication</i>
2007	30-04-2007	ANDROTH ISLAND	2007	15-12-2015
2054 (VERAVAL PLAN)	30-04-2010	VERAVAL	2121	15-12-2015
3002 (INT 7410)	15-02-2011	APPROACHES TO VISAKHAPATNAM	3002 (INT 7410)	15-12-2015

3. The new Indian Electronic Navigational Charts that are available for mariners in the market are as follows:-

<i>ENC Cell Name</i>	<i>Chart No.</i>	<i>Title</i>	<i>Issue Date</i>
IN52121A	2121	VERAVAL ANCHORAGE	28-12-2015
IN62121B	2121	VERAVAL HARBOUR	28-12-2015
IN52523M	2523	MKOKONI	22-12-2015
IN43002P	3002	APPROACHES TO VISHAKHAPATNAM	29-12-2015
IN62041A	2041	MALVAN ANCHORAGE	29-12-2015
IN52041E	2041	DEVGARH HARBOUR	29-12-2015

4. The new edition Indian Electronic Navigational Chart that is available for mariners in the market is as follows:-

<i>ENC Cell Name</i>	<i>Chart No.</i>	<i>Title</i>	<i>Issue Date</i>
IN52519K	2519	KIWAUYU BAY	29-12-2015

VI

5. The Indian Electronic Navigational Charts that are permanently withdrawn are as follows:-

<i>ENC Cell Name</i>	<i>Chart No.</i>	<i>Title</i>	<i>Issue Date</i>
IN43002V	3002	APPROACHES TO VISHAKHAPATNAM	29-06-2012
IN52041M	2041	MALVAN ANCHORAGE	01-07-2006
IN52041D	2041	DEVGARH HARBOUR	01-07-2006
IN52519K	2519	KIWAIYU BAY	29-09-2014
IN52054V	2054	VERAVAL	30-07-2010

6. The forthcoming Indian Charts are as follows:-

<i>Chart No</i>	<i>Title</i>	<i>Scale</i>	<i>Remarks</i>
408 (INT 7446)	CHOWRA ISLAND TO NANCOWRY HARBOUR	1,50,000	New Chart
2011	APPROACHES TO JAIGARH & ANGRE PORTS	25,000	New Chart
2057	PLANS ON THE GUJARAT COAST; SIMAR ANCHORAGE	25,000	New Chart
	MAHUA BANDAR	25,000	New Chart

Availability of ENC's

The complete folios of Official Indian ENC's are distributed worldwide through JEPPESEN MARINE (formerly C-MAP), UKHO and Norwegian Hydrographic Service. UKHO distributes Indian ENC's through the world wide network of their agents and distributors. Updates are also made available as per the existing policy of the distributor. Mariners and other ENC users may contact the under mentioned for further details:

United Kingdom Hydrographic Office Admiralty Way, Taunton, Somerset TA1 2DN, UK Tel: +44 (0) 1823 337900 Fax: +44 (0) 1823 330561, 1823 284077 Telex: 46274 Web site: www.hydro.gov.uk	M/s Jeppesen Norway AS Hovalandsveien 52 PO Box 212, N-4379, Egersund, Norway Ph: +47 51 464700 Mob: +91 93222 38542 Fax: +47 51 464701 Email: enc@jeppesen.com , info@c-map.co.no Website: www.jeppesen.com
M/s Primar Norwegian Hydrographic Service, Postbox 60, 4001 Stavanger Norway Telephone - +47 - 51 85 87 00 Fax - + 47 - 51 85 87 08 E-mail: data@ecc.no Website: - www.primar.org	M/s IIC Technologies Limited B-2-350/5/B-22, Road No. 3 Banjara Hills Hyderabad- 500 034 Tel: +91 4039144444 Fax: +91 4039144455 Email: somnath.marthi@iictechnologies.com Web: www.iictechnologies.com

VII TEMPORARY AND PRELIMINARY NOTICES

In Force 01 Jan 2016

(Former In Force List dated 01 Oct 2015 is cancelled)

Cancelled Notices	
Area	Notice No.
1	216/13
2	085/09, 269/12, 129/13, 055/14, 098/14, 116/14, 135/14, 145/14, 052/15, 085/15, 142/15
3	145/11, 288/12, 054/15, 055/15, 056/15, 159/15
4	Nil

1. AFRICA EAST COAST, MADAGASCAR, RED SEA, ARABIA, PERSIAN GULF, PAKISTAN.

<u>Notice</u>	<u>Charts Affected</u>	<u>Description</u>
445/06	20 – 21 – 286 – 291 – 2088 – 2094 – 2095 – 2096 – 7703 (INT 703) – 7705 (INT 705) – 8009 – 8010	ARABIAN SEA – RED SEA – Submarine cables.
152/15	2514	INDIAN OCEAN – MAURITIUS – Port Louis – Buoy.

2. INDIA WEST COAST – INDIAN OCEAN.

<u>Notice</u>	<u>Charts Affected</u>	<u>Description</u>
152/11	2081 – 2100	INDIA – WEST COAST – Pipavav Port – Dredging.
182/12	21 – 22 (INT 752) – 292 (INT 7021) – 2093	INDIA – ARABIAN SEA – Argo Floats.
038/13	2065	INDIA – WEST COAST – Port Dabhol – Buoy.
065/14	23– 31– 33 – 7070(INT 70) – 7071 (INT 71) –7072 (INT 72) –7073(INT 73) – 7702 (INT 702) –7703(INT 703) –7706(INT 706) – 7707(INT 707) –7708(INT 708)	INDIA OCEAN – Data Buoys.
099/14	21– 203 (INT 7319) – 2017	INDIA – WEST COAST – Gulf of Kachchh – Eastern Portion – Buoys.
042/15	22 (INT 752) – 214– 293 (INT 7022) – 2022 (INT 7345)	INDIA – WEST COAST – Approaches to Mormugao – Unlit Vessel.
066/15	271 – 251 (INT 7318) – 203 (INT 7319) – 2031 (INT 7326) – 2068 – 2013 (INT 7324)	INDIA – WEST COAST – Gulf of Kachchh – Port of Okha – Buoys.
078/15	21 – 211 – 255 (INT 7334) – 293 (INT 7022) – 2016 (INT 7336) – 7071 (INT 71)	INDIA – WEST COAST – Inner Approaches to Mumbai – Buoys.
087/15	273	INDIAN OCEAN – Kadmat Island to Ihavandiffulu Atoll –Buoy.
097/15	21 – 22 (INT 752) – 292 (INT 7021) – 293 (INT 7022) – 272 – 258 (INT 7348) – 254 (INT 7331) – 207 –217 – 2052 (INT 7350)	INDIA – WEST COAST – Diu Head to Mangalore – Buoy.
098/15	21– 208 – 209 – 254 (INT 7331) – 292 (INT 7021) – 2039– 2102	INDIA – WEST COAST– Bhavnagar Port – Anchorage.

VIII

2. INDIA WEST COAST – INDIAN OCEAN. (Continued).

099/15	215 – 216 – 2008 – 2010	INDIA – WEST COAST – Karwar Naval Harbour – Buoy.
109/15	2043 – 2042 – 2046	INDIA – WEST COAST – Vengurla Anchorage – Buoy.
120/15	21 – 291 – 292 – 253 – 254 – 203 – 207 – 2081 – 2068 – 2079 – 2100 – 2106	INDIA – WEST COAST – Gulf of Kachchh – Racon.
121/15	21 – 22 – 292 – 293 – 255 – 211 – 2016	INDIA – WEST COAST – Inner Approaches to Mumbai – Foul.
127/15	2040	INDIA – WEST COAST – Porbandar Port – Jetty.
128/15	21 – 22 – 292 (INT 7021) – 293 (INT 7022) – 255 (INT 7334) – 211 – 2016 (INT 7336) – 2015 (INT 7337)	INDIA – WEST COAST – Port of Mumbai – Racon.
135/15	2008 – 2010	INDIA – WEST COAST – Karwar – Buoy.
157/15	259 (INT 7356) – 260 (INT 7362) – 220 – 2029 (INT 7358) – 2004 (INT 7359).	INDIA – WEST COAST – Kochi Harbour – Buoy.
158/15	260 (INT 7362) – 261 – 222 – 223 – 2012	INDIA – WEST COAST – Vizhinjam Anchorage – Sea Cage Farm.
163/15	21 – 22 (INT 752) – 211 – 255 (INT 7334) – 292 (INT 7021) – 293 (INT 7022) – 2015 (INT 7337) – 2016 (INT 7336) – 2076 (INT 7338)	INDIA – WEST COAST – Mumbai Port – Buoys. Wreck.
183/15	262 (INT 7365) – 224 – 2075 (INT 7366)	INDIA – WEST COAST – Tuticorin Harbour – Breakwater.
186/15	268 (INT 7353) – 273	INDIA – Central Lakshadweep – Light.
190/15	21 – 22 (INT 752) – 292 (INT 7021) – 293 (INT 7022) – 272 – 257 (INT 7343) – 259 (INT 7356) – 214 – 221	INDIA – WEST COAST – Arabian Sea – ADCP Moorings.
200/15	202 – 203 (INT 7319) – 2031 (INT 7326) – 2068	INDIA – WEST COAST – Gulf of Kachchh Deep Water Route – Buoy.
201/15	21 – 22 (INT 752) – 23 – 268 (INT 7353) – 273 – 292 (INT 7021) – 293 (INT 7022) – 7703 (INT 703) – 7705 (INT 705) – 7706 (INT 706)	INDIA – WEST COAST – Arabian Sea – Data Buoys. Tsunami Buoy.
035/16	22 – 272 – 258 (INT 7348) – 218 – 2025	INDIA – WEST COAST – Azhikkal Anchorage – Racon.

3. INDIA EAST COAST – ANDAMAN NICOBAR, SRI LANKA, MYANMAR.

<u>Notice</u>	<u>Charts Affected</u>	<u>Description</u>
237/10	406 – 4010	ANDAMAN SEA – INDIA – Little Andaman Islands – Hut Bay – Light.
094/12	33 – 41 (INT 757) – 402 – 403 – 404 – 405 – 406 – 407 – 408 – 409 – 471 – 472 (INT 7032) – 473 (INT 7031) – 4016 – 4035	INDIA – ANDAMAN SEA – Fish Aggregating Devices.
183/12	31 – 32 (INT 754) – 33 – 354 (INT 7408)	INDIA – BAY OF BENGAL – Argo Floats.
212/12	3034	INDIA – EAST COAST – Krishnapatnam Port – Port Development. Dredging.

IX

3. INDIA EAST COAST – ANDAMAN NICOBAR, SRI LANKA, MYANMAR. (Continued).

225/12	31 – 321 – 322 – 371 – 3020	BAY OF BENGAL – MYANMAR COAST – Combermere Bay to Cheduba Strait – Platform.
159/13	31 – 41 (INT757) – 409 – 471 – 472 – 4035 – 4039	INDIA – ANDAMAN SEA – Nicobar Island – Campbell Bay – Jetty.
195/13	352(INT7416) – 3005	INDIA – EAST COAST – Gopalpur Port – Breakwater. Wrecks. Onshore Installation.
208/14	41 (INT 757) – 410 – 411 – 451 – 452 – 4019	Myanmar – Yangon River – Buoys.
068/15	31 – 32 (INT 754) – 391 – 354 (INT 7408) – 308 – 3002 (INT 7410) – 3012 (INT 7411)	INDIA – EAST COAST – Visakhapatnam Harbour – Buoy.
143/15	31 – 32 (INT 754) – 33 – 41 (INT 757) – 292 (INT 7021) – 404 – 405 – 472 (INT 7032) – 473 (INT 7031) – 7706 (INT 706) – 7707 (INT 707)	INDIA – EAST COAST – Bay of Bengal – Data Buoy. Tsunami Buoy.
184/15	41 (INT 757)	ANDAMAN SEA – Myanmar – Wellhead Platform – Intrafield Pipeline.
185/15	408 – 409 – 472 – 4039 – 4182 – 4205	INDIA – Andaman Sea – Lights.
191/15	31 – 32 (INT 754) – 33 – 308 – 352 (INT 7416) – 354 (INT 7408) – 355 (INT 7405) – 357 (INT 7397) – 391	INDIA – EAST COAST – Bay of Bengal – ADCP Moorings.
192/15	31– 41 (INT 757) – 371 – 324 – 325	INDIA – BAY OF BENGAL – Preparis North Channel to Rangoon River – Drilling Operation.
193/15	31– 41 (INT 757) – 371 – 451– 325	INDIA – BAY OF BENGAL – Sittwe (Akyab) to Preparis Island – Survey Operation.
194/15	31– 41 (INT 757) – 371 – 451– 325	INDIA – BAY OF BENGAL – Sittwe (Akyab) to Preparis Island – Survey Operation.
195/15	31– 33 – 41 (INT 757) – 325– 371– 404 (INT 7031)	INDIA – BAY OF BENGAL – Sittwe (Akyab) to Preparis Island – Survey Operation.
036/16	308 – 3002 (INT 7410) – 3012 (INT 7411)	INDIA – EAST COAST – Visakhapatnam Harbour – Buoy.
037/16	31 – 32 (INT 754) – 33 – 356 (INT 7400) – 391 – 3034	INDIA – EAST COAST – Approaches to Krishnapatnam – Racon.
038/16	31– 7071 (INT 71) – 7073 (INT 73) – 7706 (INT 706)	INDIA – BAY OF BENGAL – Survey Operation.

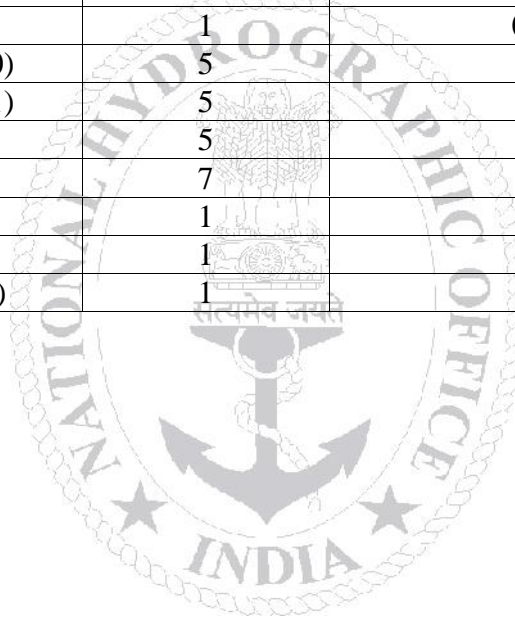
4. MALACCA STRAIT, SINGAPORE STRAIT AND SUMATERA

383/03	33 – 41(INT 757)	INDONESIA – Sumatera – North and Northwest Coasts – Restricted area.
377/07	7508 (INT 508)	INDONESIA – Sumatera – Pulau Belitung West Coast – Tanjungpandan to Jawa North Coast – Pakis – Submarine cable.
238/10	41 (INT 757) – 471	INDONESIA – Sumatera – North West Coast – Pulau Bunta –Lights.

SECTION – I

The list of charts affected by the Notices 031 to 038 contained in this edition is as follows:

CHART NUMBER	FOLIO NO.	NOTICE NO.
22 (INT 752)	3	035 (T)
31	5	037 (T), 038 (T)
32 (INT 754)	5	037 (T)
33	5	037 (T)
205	2	034
206	2	034
218	3	035 (T)
258 (INT 7348)	3	035 (T)
272	4	035 (T)
308	5	036 (T)
356 (INT 7400)	5	037 (T)
391	5	037 (T)
2025	3	035 (T)
2519	1	031, 032
3002 (INT 7410)	5	036 (T)
3012 (INT 7411)	5	036 (T)
3034	5	037 (T)
4019	7	033
7071 (INT 71)	1	038 (T)
7073 (INT 73)	1	038 (T)
7706 (INT 706)	1	038 (T)




SECTION – II

PERMANENT NOTICES

***031 (01/16) INDIAN OCEAN – KENYA – Kiwaiyu Bay – Coastline.**

Source: NHO Dehradun.


Chart 2519 [previous update 104/15]

Insert  accompanying block showing amendments to Coastline centered on: 02° 06' 50S., 41° 06' 00E.

***032 (01/16) INDIAN OCEAN – KENYA – Kiwaiyu Bay – Coastline.**

Source: NHO Dehradun.

Chart 2519 [previous update 031/16]

Insert  accompanying block showing amendments to Coastline centered on: 02° 06' 20S., 41° 08' 50E.

***033 (01/16) ANDAMAN SEA – BURMA – Gulf of Martaban – Rangoon River and Approaches – Buoy.**

Source: Myanmar Hydrographic Centre.

Chart 4019 [previous update 168/13]

Insert  16° 39' 68N., 96° 13' 96E.

***034 (01/16) Miscellaneous updates to charts.**

Source: NHO Dehradun.

Chart	Previous Updates	Details
205	089/15	Insert Chart No.2121 and Magenta limit as follows: 20° 49' 50N., 70° 17' 00E. 20° 56' 50N., 70° 17' 00E. 20° 56' 50N., 70° 25' 00E. (E Border) 20° 49' 50N., 70° 25' 00E. (E Border) 20° 49' 50N., 70° 17' 00E.
		Delete Chart No. 2054 and Magenta limit as follows: 20° 49' 50N., 70° 17' 00E. 20° 56' 50N., 70° 17' 00E. 20° 56' 50N., 70° 25' 00E. (E Border) 20° 49' 50N., 70° 25' 00E. (E Border) 20° 49' 50N., 70° 17' 00E.
206	173/15	Insert Chart No.2121 and Magenta limit as follows: 20° 49' 50N., 70° 17' 00E. 20° 56' 50N., 70° 17' 00E. 20° 56' 50N., 70° 25' 90E. 20° 49' 50N., 70° 25' 90E. 20° 49' 50N., 70° 17' 00E.
		Delete Chart No. 2054 and Magenta limit as follows: 20° 49' 50N., 70° 17' 00E. 20° 56' 50N., 70° 17' 00E. 20° 56' 50N., 70° 26' 20E. 20° 49' 50N., 70° 26' 20E. 20° 49' 50N., 70° 17' 00E.

SECTION – III

TEMPORARY AND PRELIMINARY NOTICES

***035 (T) (01/16) INDIA – WEST COAST – Azhikkal Anchorage – Racon.**

Source: DLL Cochin.

- Following lighthouse RACON is reported inoperative.

Sl No.	Name	Postion	RACON Code	Charts Affected
(a)	Mountdilli	12° 00'·43N., 75° 12'·12E.	'K'	22 (INT 752) – 272 – 258 (INT 7348) – 218 – 2025

- Mariners are advised to contact local port authorities for more information.

***036 (T) (01/16) INDIA – EAST COAST – Visakhapatnam Harbour – Buoy.**

Source: HQENC.

- A temporary marker buoy with green flashing light has been laid in position 17° 41'·42N., 83° 16'·92E. (near jetty no. 9) to indicate channel limit.
- Mariners are advised to navigate with caution and contact local port authorities for more details.

Charts affected – 308 – 3002 (INT 7410) – 3012 (INT 7411)

***037 (T) (01/16) INDIA – EAST COAST – Approaches to Krishnapatnam – Racon.**

Source: DLL Visakhapatnam.

- Following lighthouse RACON is reported inoperative.

Sl No.	Name	Postion	RACON Code	Charts Affected
(a)	Krishnapatnam	14° 17'·14N., 80° 08'·27E.	'C'	31 – 32 (INT 754) – 33 – 356 (INT 7400) – 391 – 3034

- Mariners are advised to contact local port authorities for more information.

***038 (T) (01/16) INDIA – BAY OF BENGAL – Survey Operation.**

Source: Myanmar Hydrographic Office.

- 3D Seismic survey will be carried out by survey vessel MV Polarcus Amani (call sign C6ZD3) in below mentioned block till 30 April 2016:

Point	Position
Point A	18° 04'·38N., 90° 29'·11E.
Point B	19° 02'·19N., 91° 09'·35E.
Point C	19° 02'·25N., 91° 20'·21E.
Point D	18° 59'·45N., 91° 19'·49E.
Point E	19° 00'·05N., 92° 08'·52E.
Point F	18° 27'·49N., 92° 08'·52E.
Point G	18° 15'·23N., 92° 00'·02E.
Point H	18° 15'·04N., 91° 17'·25E.
Point I	18° 05'·06N., 91° 10'·25E.

- During the operation period, unauthorized navigation, anchoring, fishing and trawling are prohibited within 4Km from above mentioned survey area.
- Mariners are advised to navigate with caution.

Charts affected – 31– 7071 (INT 71) – 7073 (INT 73) – 7706 (INT 706)

SECTION – IV **MARINE INFORMATION**

1. NAVTEX TRANSMISSION

MSI Promulgation by NAVTEX Stations at Mumbai and Chennai are temporarily out of operation.

(Source – DG Shipping)

2. MISIDENTIFYING FISHING BOATS AS PIRATE SKIFFS

All merchant vessels entering Indian EEZ are advised that dense fishing activity may be encountered off West Coast of India. Fishing is generally carried out by mechanized boats and single hull boats with outboard motors carrying 4-5 crew using long lines upto 50 NM from coast. The vessels traversing the nets are likely to be approached by fishing boats for safeguarding nets and lines and should not be mistaken as skiffs and PAG's. Masters of vessels to report any suspicious activity of fishing vessels immediately to MRCC (Mumbai) on telephone +91-22-24388065, 24316558, Email: - indsar@vsnl.net, or icgmrc_mumbai@mtnl.net . Any suspicious activity of skiffs / boats to be photographed if possible. Merchant vessels with armed guards on board are to report presence of guards to Indian Navy/Coast Guard while transiting Indian EEZ.

(Source - NAVAREA VIII Warning 100/12)

3. DISPLAY ANOMALIES IN ECDIS

(a) Mariners are advised that the International Hydrographic Organization (IHO) check data set shows that some ECDIS systems fail to display some significant underwater features in the standard display mode. The use of this check data set, issued through ENC service providers and available from the IHO website www.iho.int, to check the operation of ECDIS is strongly recommended. JRC has confirmed that certain versions of JRC ECDIS fail to display some types of wreck and obstructions, including stranded wrecks, in any display mode.

Where JRC ECDIS is in use, paper charts should be the primary means of navigation until the ECDIS has been proved to operate correctly. See www.jrc.co.jp/eng/product/marine/whatsnew/20120313/index.html for further information.

(b) Some Electronic Chart Display and Information Systems (ECDIS) may exhibit operating anomalies. The International Maritime Organization's (IMO) circular SN.1/CIRC.312 pages /imodocs.aspx (registration required) lists identified anomalies, Their characteristics and remedial advice. Mariners are reminded that they should access the International Hydrographic Organization (IHO) data presentation and performance check (DPPC) dataset (news links of <http://www.iho.int/srv1>) and ensure that all installed ECDIS units are checked.

(Source - NAVAREA VIII Warning 141/12 & 529/12)

4. SAFETY FAIRWAYS, RECOMMENDED ROUTES, TRAFFIC SEPARATION SCHEME

The Director General Shipping has established Safety fairways, recommended routes and traffic separation scheme (TSS) in restricted Indian waters including the offshore development area to enhance safety of navigation. The details of coordinates for the above have been published in the fortnightly Indian Notices to Mariners Edition No 14 of 2008 (16th July 2008).

(a) **Safety Fairways:** An area within which permits are not granted for the erection of oil or gas related structures. The use of a safety fairway is not usually mandatory, but is recommended. Safety fairways have been promulgated in and round offshore development area in Arabian Sea up to the Exclusive Economic Zone (EEZ) due to increased weather related marine accidents and dense traffic. These are mandatory for all Indian ships and vessels transiting through the ODA and recommendatory for all foreign flag ships and vessels irrespective of size.

(b) Recommended routes have been established along the coast of Gujarat. These are to assist mariners to navigate safely in order to represent the best routes for crossing traffic and to minimize head-on

encounters in vicinity of Oilfield Development Areas and regulate coastal traffic. Mariners are advised to keep 1 to 2 miles starboard of the shown routes consistent with Rules of the Road.

(c) Traffic Separation Schemes (TSS). The TSS off Mumbai harbour is mandatory for all Indian and foreign flag ships and vessels entering and leaving Mumbai harbour and Jawaharlal Nehru Port Trust (JNPT)/ Nhava-Sheva harbour irrespective of size.

5. **GAGAN SYSTEM COMMISSIONED FOR OPERATIONS**

The GAGAN System is now commissioned for safety of life, civil aviation, and en- route operations in addition to all other non-aviation applications. The GAGAN signal is being broadcasted through GSAT-8 and GSAT-10 with PRN127 & 128 respectively.

All the GPS users are requested to enable SBAS functionality in their receivers, configure it to receive PRN-127& 128 and avail the benefits of GAGAN in terms of increased accuracy and reliability. There may be occasional signal outages due to system up-gradation activities.

6. **USAGE OF THURAYA/ IRRIDUM AND SATELLITE PHONE**

The use of Thuraya, Iridium and other such satellite phone is banned in India under Sec 6 of Indian Wireless Act and Sec 20 of Indian Telegraph Act. It is intimated to all shipping companies/ shipping agents that use of Thuraya/ Iridium and other such satellite phones are banned in Indian waters and seafarers should not use the same.

Satellite phones can be used only after no objections certificate issued by department of telecommunication (DOT) on a case to case basis. The shipping agents should mandatorily intimate the details of person carrying Thuraya and the particulars of Thuraya, Iridium and other such sets in pre arrival notification on security (PANS).


The unauthorized holders of Thuraya/ Iridium and other such Satellite phones can be prosecuted under Sec 6 of Indian Wireless Act and Sec 20 of Indian Telegraph Act.

7. **CAUTIONARY NOTE**

There is a finite amount of lag between publication of large and small scale Indian Nautical Charts. To avoid uncertainty the mariners are advised to use large scale charts for coastal navigation wherever applicable and available. In addition, mariners are to refer large scale charts in conjunction with small scale charts in areas where both overlap during both planning and conduct of passage.

Distribution of Indian Paper Charts and Nautical Publications

Indian Nautical Charts and Publications from National Hydrographic Office, India are now available globally. Details of overseas chart agents are as follows:-

JEPPESEN MARINE Jeppesen Norway AS P.O. 212, N-4379, Egersund, Norway Ph: 0047 51 464700 Fax: 0047 51 464701 Email: info@c-map.no Site: www.c-map.no	C-Map US Commercial 133 Falmouth Road, Building 2, Postal Code: 02649, Mashpee, MA, America Ph: +1 (508) 477 8010 Fax: +1 (508) 539 4381 Email: info@c-map.com	C-Map (UK) Ltd. Systems House Delta Business Park Salterns Lane, Fareham, PO16 0QS, United Kingdom, Ph: +44 (0) 1329 517777 Fax: +44 (0) 1329 517778 Email: info@c-map.co.uk
Mari-Sys Pte Ltd. 20 Ayer Rajah Crescent, 08-21, SE 139964, Republic of Singapore Ph: +65 6776 1898 Email: info@mari-sys.com	Bogerd Martin NV, Oude Leeuwenrui 37 2000 Antwerp, Belgium Ph: +32 (3) 2134170 Fax: +32 (3) 2326167 Email: sales@martin.be Site: www.martin.be	Bogerd Martin Tianjin (China Branch) 2-B101 FTZ Hi-Tech Development Centre 131 Haibin 9 Road 300461 Tianjin China Ph: +86 22 257 62 721 Fax: +86 22 257 62 722 Email: charts-tj@martincn.com
C-Map Holland Paleiskade 100 PO Box 7 1781 AR Den Helder, Holland Ph: +31 223 616 700 E Mail: CorMallie cor@chartworx.nl		

List of Indian Chart Agents

M/s OSA Books and Periodicals R-246, Greater Kailash –I, New Delhi - 110 048 Tel/Fax: 011-46557337, Mob: 9971093992 Email: rpani246@gmail.com	M/s Sterling Book House 181, Dr. DN Road, Fort, Mumbai – 400 001 Tel: 91-22-22612521, Fax: 91-22-22623551 Email : sbh@vsnl.com
M/s Global Charts & Nav. Aids Pvt. Limited 1A, Goa Mansion, Ground Floor, 58, Dr. Sunderlal Bahl Path (Goa Street), Fort, Mumbai - 400 001 Tel: 91-22-22626318, 22626380 Fax: 91-22-22621488 Email: sales@globalcharts.in Web: www.globalcharts.com.sg	EW Liner Charts & Publication (India) 2/524, Sundeep Road, Chinna Neelangarai, Chennai 600041 Tele/Fax : +91-44-24490668 Mob No : +91-9003245348 Email: maritimeindia@airtelmail.in
M/s C & C Marine Combine 25 Bank Street, 1 st Floor, Mumbai - 400 023 Tel: 91-22- 22660525, 22661937, 22672143 Fax: 91-22-22670896 Email: ccmarine@vsnl.com, sales@ccmarine.in	Gujarat Pipavav Port Limited PO – Ucchaiya, Dist – Amereli, Gujarat – 365 560 Tele: +91- 2794302400 Fax: 302413 (Only for Pipavav Port Chart)
M/s SVR Chart Agencies Door No.50-81-35/6, Santhipuram, Seetammampeta, Visakhapatnam – 530 016 Tele Fax: 0891-2799471, Cell: +91 9440132553, 9849120988, 9885308200 Email : mahalakshmitravels@hotmail.com	M/s Jeppesen India Pvt. Ltd 505, Raheja Arcade, Sector 11 CBD, Belapur, Navi Mumbai – 400 614 Tel: +91 22 6510 3668, Fax: +91 22 55939504 Mob: +9322238542 Email: RajShekhar.Chakravorty@jeppesen.com, info@jeppesen.com Website: www.jeppesen.com
M/s JM Maritime Services 24/24C Kavarana Building, Ground Floor, Wadi Bunder, P.D. Mellow Road, Mumbai – 400 009 Tel: +91 22 23736956, Fax: 022 - 23725083 Cell: +91 9820788357 Email : jmms@mtnl.net.in, charts@mtnl.net.in	M/s Global Marine Infratech Pvt. Ltd. Siksha Sandan, Ground Floor, ND-7, Bhubaneswar – 751015 Tel: +91-674-2550599, Fax: +91-674-2551899 Cell:- +919937064299 Email: ashishkantha@gmiindia.in Web: www.gmiindia.in
Lift O Marine Allen's Mansion, C6, Nungi Station Road, Kolkata – 700140 Mob: +91 9836972027 / 8902228463 Email: sankar@liftomarine.org / liftomarine77@gmail.com Web: www.liftomarine.org	M/s L. R. Marine Services 301, 3rd Floor, Biry House, 265, Perin Nariman Street, Fort, Mumbai - 400 001. Tel: +91-22-2269 1535, Fax: +91-22-6635 9148 Cell No: +91 8108926880/ +91 98214 60258 Email: lrcharts@gmail.com, lrmarine@live.com
M/s Engineering Logistics Executive Multi Services Elems Charts, Door No: 61-4-45-A/4, Prakash Nagar Malkapuram Visakhapatnam – 530 011 Mob: +91 9133871827 Email: sales@elemscharts.in Web: www.elemscharts.in	M/s IIC Technologies Limited B-2-350/5/B-22, Road No. 3, Banjara Hills, Hyderabad – 500 034 Tel: +91 4039144444 Fax: +91 4039144455 Email: somnath.marthi@iictechnologies.com Web: www.iictechnologies.com
M/s Aatash Computer & Communications Pvt. Ltd. 213, Devarc Commercial Complex Nr. Iscom Circle (above Woodland Showroom) S. G. Highway Ahmedabad – 380 015 Mob: +91 7926923982 Email: jyoti@aatash.com, zubin@aatash.com	M/s Zenith Surveys (I) Pvt. Ltd. Lakhani's Plam View, First Floor, Office No. 889, Sector 48, Nerul, Navi Mumbai – 400 706 Tel/ Fax: +91-22- 27708011 Email: zenithsurveys703@gmail.com, nyvmane@yahoo.com Web: www.zenithsurvey.com

SECTION – V

NAVAREA – VIII WARNINGS IN FORCE

1. For details of NAVAREA limits and organisation/coordination, please refer to Notice No. 12 of the Special edition of Indian Notice to Mariners – 2012.

2. NAVAREA VIII Warnings in force as on 31 Dec 15:

<u>2015 SERIES</u>	– 124	287	288	298	334	386	408	439	445	486	498	514	556	567	573	582	616	633	635
	644	646	672	706	708	720	728	729	735	737	770	787	793	829	848	849	854	857	866
	880	885	886	891	892	893	894	896	897	899	900	901	902	903					

3. NAVAREA VIII Warnings issued during the period from 16 Dec to 31 Dec 15 (both dates inclusive) are as tabulated below:–

867. Cancel NAVAREA 767. India West Coast – Mumbai High. Charts 21 255 292 INT 71. Vessel HLS 2000 will undertake deck installation from 17 - 20 Dec 15 in position 19-29.94N 071-16.29E and tower installation from 21 - 24 Dec 15 in position 19-31.74N 071-18.16E (.)

2. Wide berth around vessel requested.

3. Cancel this MSG 241830 UTC Dec 15.

868. India East Coast – Bay of Bengal. Charts INT 71 INT 706. Missile firing by Naval ships scheduled from 191030-201330 UTC Dec 15 in area bounded by 14-43N 088-30E, 13-43N 087-55E, 15-05N 086-15E, 15-45N 085-35E, 16-40N 086-12E, 16-17N 087-00E.

2. Safe flying Ht 22 KM.

3. Cancel this MSG 201430 UTC Dec 15.

869. Cancel NAVAREA VIII 850. India West Coast. Charts 21 22 293 INT 71. Rig list correct at 161000 UTC Dec 15

ABAN ICE	18-55.01N 070-18.95E
ABAN III	19-22.07N 071-26.07E
ABAN IV	19-29.79N 071-19.83E
CE THORNTON	19-40.10N 072-18.89E NEW
DISCOVERY-1	19-12.50N 072-02.24E
DYNAMIC VISION	18-39.23N 070-58.86E
DEEP SEA FORTUNE	19-40.14N 072-00.34E
DEEP SEA FOSSIL	19-14.25N 072-06.46E
FG MCCLINTOCK	18-58.31N 071-29.99E
GREAT DRILL CHAAYA	18-40.10N 072-13.59E
GREAT DRILL CHETNA	21-37.38N 068-26.55E
GREAT DRILL CHITRA	19-21.35N 071-50.13E
GREAT DRILL CHAARU	18-59.30N 072-16.58E
HARVEY H WARD	19-32.84N 071-22.80E
JINDAL STAR	18-36.20N 072-13.99E
JT ANGEL	22-36.89N 068-26.06E
KEDARNATH	20-17.68N 071-55.90E
MERCURY FOCUS	21-18.12N 072-31.64E
NOBLE ED HOLT	19-01.90N 071-32.57E
PARAGON L-786	19-29.88N 071-24.70E
PARAGON M 1161	19-17.55N 071-16.91E
RON TAPMEYAR	18-47.47N 071-59.99E
SAGAR GAURAV	19-07.88N 070-58.50E
SAGAR SHAKTI	19-39.70N 071-04.71E
SAGAR JYOTI	19-25.14N 071-15.83E
SAGAR KIRAN	18-44.50N 072-19.63E
SAGAR LAXMI	20-58.00N 071-33.00E
SAGAR PRAGATI	20-58.00N 071-33.00E
SAGAR UDAY	19-07.35N 072-06.45E
SUNDOWNER VII	18-38.79N 072-14.94E
TRIDENT XII	19-25.23N 071-16.99E
VICTORY DRILLER	18-31.95N 072-15.23E
VIRTUE-I	18-58.44N 071-37.44E
VALIANT DRILLER	19-38.88N 071-21.03E

2. Wide berth requested.

870. India East Coast – Visakhapatnam. Charts 3002 3012 INT 71. Temporary marker buoy with green flashing light laid 17-41.42N 083-16.92E.

871. India West Coast – off Mumbai. Charts 255 292 INT 71. Survey vessel MV Albatross-19 progressing geophysical survey till 18 Jan 16 in area bounded by 18-40.70N 071-17.70E, 19-39.90N 071-21.80E, 19-15.80N 071-26.40E, 19-19.70N 071-10.60E, 19-13.30N 072-05.00E, 19-13.40N 072-07.40E, 19-04.80N 072-09.30E, 19-04.70N 072-05.60E, 18-39.90N 072-12.40E, 18-39.90N 072-22.00E, 18-32.50N 072-12.40E.	
2.	Wide berth of 01 NM around the vessel requested.
3.	Cancel this MSG 181830 UTC Jan 16.
872. India East Coast – Bay of Bengal. Charts 31 308 354 INT 71. Launch of experimental flight vehicle scheduled from 22-24 Dec from 0630-1130 UTC Dec 15 in danger zone bounded by 17-11.74N 083-29.07E, 19-57.95N 089-14.57E, 21-12.90N 088-26.23E, 17-27.81N 083-18.19E.	
2.	No over flight and shipping permitted in danger zone.
3.	Cancel this MSG 241230 UTC Dec 15.
873. Andaman Sea – off South Andaman. Charts 41 406 INT 71. Firing practice scheduled on 221930-231230, 231930-241230, 241930-251230 UTC Dec 15 in area bounded by 07-15N 093-30E, 07-14N 094-22E, 08-00N 094-40E, 10-35N 093-05E, 09-50N 091-55E.	
2.	Safe flying Ht 8 KM.
3.	Cancel this MSG 251330 UTC Dec 15.
874. India West Coast – Okha. Charts 21 202 203 251 271 291 2013 2068 INT 71. Firing practice by Naval coast battery scheduled on 21 Dec 15 from 0530-0730 UTC.	
2.	Danger area extending seaward up to 12 NM within bearing 300 to 020 from 22-28.04N 069-04.99E. Safe flying Ht 13 KM.
3.	Cancel this MSG 210830 UTC Dec 15.
875. India West Coast – Arabian Sea. Charts 22 293 INT 71. Firing by Naval ships scheduled on 22 and 23 Dec 15 from 0330-0730 UTC in area bounded by 17-25N 070-59E, 17-45N 070-12E, 16-59N 069-51E, 16-39N 070-39E.	
2.	Safe flying Ht 7 KM.
3.	Cancel this MSG 230830 UTC Dec 15.
876. India East Coast – Krishnapatnam. Charts 31 32 356 391 INT 706. Krishnapatnam lighthouse (14-17.14N 080-08.27E) off air.	
877. Cancel NAVAREA VIII 869. India West Coast. Charts 21 22 293 INT 71. Rig list correct at 181000 UTC Dec 15	
	ABAN ICE 18-55.01N 070-18.95E
	ABAN III 19-22.07N 071-26.07E
	ABAN IV 19-29.79N 071-19.83E
	CE THORNTON 19-40.10N 072-18.89E
	DISCOVERY-1 19-12.50N 072-02.24E
	DYNAMIC VISION 18-39.23N 070-58.86E
	DEEP SEA FORTUNE 19-40.14N 072-00.34E
	DEEP SEA FOSSIL 19-14.25N 072-06.46E
	FG MCCLINTOCK 18-58.31N 071-29.99E
	GREAT DRILL CHAAYA 18-40.10N 072-13.59E
	GREAT DRILL CHETNA 21-37.38N 068-26.55E
	GREAT DRILL CHITRA 19-21.35N 071-50.13E
	GREAT DRILL CHAARU 18-59.30N 072-16.58E
	HARVEY H WARD 19-32.84N 071-22.80E
	JINDAL STAR 18-36.20N 072-13.99E
	JT ANGEL 22-36.89N 068-26.06E
	KEDARNATH 20-17.68N 071-55.90E
	MERCURY FOCUS 21-18.12N 072-31.64E
	NOBLE ED HOLT 19-01.90N 071-32.57E
	PARAGON L-786 19-29.88N 071-24.70E
	PARAGON M 1161 18-54.75N 071-49.57E NEW
	RON TAPMEYAR 18-47.47N 071-59.99E
	SAGAR GAURAV 19-07.88N 070-58.50E
	SAGAR SHAKTI 19-39.70N 071-04.71E
	SAGAR JYOTI 19-25.14N 071-15.83E
	SAGAR KIRAN 18-44.50N 072-19.63E
	SAGAR LAXMI 20-58.00N 071-33.00E
	SAGAR PRAGATI 20-58.00N 071-33.00E
	SAGAR UDAY 19-07.35N 072-06.45E
	SUNDOWNER VII 18-38.79N 072-14.94E
	TRIDENT XII 19-25.23N 071-16.99E
	VICTORY DRILLER 18-31.95N 072-15.23E
	VIRTUE-I 18-58.44N 071-37.44E
	VALIANT DRILLER 19-38.88N 071-21.03E
2.	Wide berth requested.

878.	NAVAREA VIII Warnings in Force as on 18 Dec 15. 2015 series – 124 287 288 298 334 386 408 439 445 486 498 514 556 565 567 573 582 616 633 635 644 646 672 706 708 712 720 728 729 735 737 753 768 770 787 793 804 811 812 824 828 829 847 848 849 851 854 857 866 867 868 870 871 872 873 874 875 876 877 (a) NAVAREA VIII warnings less than 42 days promulgated via SafetyNet. (b) Text of NAVAREA VIII warnings inforce including those which no longer broadcast available on www.hydrobharat.gov.in . (c) Cancel this MSG 251000 UTC Dec 15.																																																						
879.	India West Coast – Kolachel. Charts 222 260 INT 71. Muttom Point (08-07.45N 077-19.00E) Tideland RACON non ops.																																																						
880.	India West Coast – Bhoghat to Okha. Charts 21 204 INT 71. SV NP Soha III progressing survey and diving ops till 14 Jan 16 in area bounded by 21-57.02N 069-09.57E, 21-57.02N 069-10.15E, 21-55.67N 069-10.15E, 21-55.67N 069-09.57E. 2. Cancel this MSG 141830 UTC Jan 16.																																																						
881.	Cancel NAVAREA VIII 872 and this MSG.																																																						
882.	SW Bay of Bengal. Chart INT 71. SLFV Jordan adrift 09-55N 085-47E. 2. Cancel this MSG 241000 UTC Dec 15.																																																						
883.	India East Coast – Chennai. Charts 32 357 INT 71. INS Sandhayak with survey boats progressing Hydrographic Survey till 29 Dec 15 in area bounded by 12-59.24N 080-15.00E, 13-26.00N 080-15.00E, 13-26.00N 080-32.48E, 12-59.24N 080-32.48E. 2. Wide berth (at least 02 NM) from ship and boat requested. 3. Cancel this MSG 291830 UTC Dec 15.																																																						
884.	Andaman Sea – off South Andaman. Charts 41 405 4030 INT 71. Firing practice on Passage Island scheduled on 25 Dec 15 from 0130-0530 UTC in area bounded by 11-17N 092-34E, 11-05N 092-34E, 11-05N 092-48E, 11-17N 092-48E. Safe flying Ht 6 KM. 2. Cancel this MSG 250630 UTC Dec 15.																																																						
885.	Cancel NAVAREA 867. India West Coast – Mumbai High. Charts 21 255 292 INT 71. HLS 2000 will undertake jacket installation from 25 Dec 15 - 11 Jan 16 in 19-39.48N 071-17.59E. 2. Wide berth around vessel requested.																																																						
886.	Cancel NAVAREA 804. India West Coast – Mumbai ODA to Gulf of Khambhat. Charts 22 INT 71. SV Fugro Mapper will undertake seabed survey from 26 Dec 15 - 25 Jan 16 in blocks of 1 KM around 21-03N 072-26E, 19-30N 071-21E, 18-42N 072-21E, 18-46N 072-17E, 18-42N 072-20E, 18-44N 072-18E, 19-19N 071-20E, 19-15N 071-21E, 20-32N 072-09E, 18-39N 072-13E, 19-10N 070-57E (.) 2. Wide berth around vessel requested.																																																						
887.	Cancel NAVAREA VIII 877. India West Coast. Charts 21 22 293 INT 71. Rig list correct at 231000 UTC Dec 15 <table> <tr><td>ABAN ICE</td><td>18-55.01N 070-18.95E</td></tr> <tr><td>ABAN III</td><td>19-22.07N 071-26.07E</td></tr> <tr><td>ABAN IV</td><td>19-29.79N 071-19.83E</td></tr> <tr><td>CE THORNTON</td><td>19-40.10N 072-18.89E</td></tr> <tr><td>DISCOVERY-1</td><td>19-12.50N 072-02.24E</td></tr> <tr><td>DYNAMIC VISION</td><td>18-39.23N 070-58.86E</td></tr> <tr><td>DEEP SEA FORTUNE</td><td>19-40.14N 072-00.34E</td></tr> <tr><td>DEEP SEA FOSSIL</td><td>19-14.25N 072-06.46E</td></tr> <tr><td>FG MCCLINTOCK</td><td>18-58.31N 071-29.99E</td></tr> <tr><td>GREAT DRILL CHAAYA</td><td>18-40.10N 072-13.59E</td></tr> <tr><td>GREAT DRILL CHETNA</td><td>21-37.38N 068-26.55E</td></tr> <tr><td>GREAT DRILL CHAARU</td><td>18-59.30N 072-16.58E</td></tr> <tr><td>HARVEY H WARD</td><td>19-32.84N 071-22.80E</td></tr> <tr><td>JINDAL STAR</td><td>18-36.20N 072-13.99E</td></tr> <tr><td>JT ANGEL</td><td>22-36.89N 068-26.06E</td></tr> <tr><td>MERCURY FOCUS</td><td>21-18.12N 072-31.64E</td></tr> <tr><td>NOBLE ED HOLT</td><td>19-01.90N 071-32.57E</td></tr> <tr><td>PARAGON L-786</td><td>19-29.88N 071-24.70E</td></tr> <tr><td>PARAGON M 1161</td><td>18-54.75N 071-49.57E</td></tr> <tr><td>RON TAPMEYAR</td><td>18-47.47N 071-59.99E</td></tr> <tr><td>SAGAR GAURAV</td><td>19-07.88N 070-58.50E</td></tr> <tr><td>SAGAR SHAKTI</td><td>19-39.70N 071-04.71E</td></tr> <tr><td>SAGAR JYOTI</td><td>19-25.14N 071-15.83E</td></tr> <tr><td>SAGAR KIRAN</td><td>18-44.50N 072-19.63E</td></tr> <tr><td>SAGAR LAXMI</td><td>20-58.00N 071-33.00E</td></tr> <tr><td>SAGAR PRAGATI</td><td>20-58.00N 071-33.00E</td></tr> <tr><td>SAGAR UDAY</td><td>19-07.35N 072-06.45E</td></tr> </table>	ABAN ICE	18-55.01N 070-18.95E	ABAN III	19-22.07N 071-26.07E	ABAN IV	19-29.79N 071-19.83E	CE THORNTON	19-40.10N 072-18.89E	DISCOVERY-1	19-12.50N 072-02.24E	DYNAMIC VISION	18-39.23N 070-58.86E	DEEP SEA FORTUNE	19-40.14N 072-00.34E	DEEP SEA FOSSIL	19-14.25N 072-06.46E	FG MCCLINTOCK	18-58.31N 071-29.99E	GREAT DRILL CHAAYA	18-40.10N 072-13.59E	GREAT DRILL CHETNA	21-37.38N 068-26.55E	GREAT DRILL CHAARU	18-59.30N 072-16.58E	HARVEY H WARD	19-32.84N 071-22.80E	JINDAL STAR	18-36.20N 072-13.99E	JT ANGEL	22-36.89N 068-26.06E	MERCURY FOCUS	21-18.12N 072-31.64E	NOBLE ED HOLT	19-01.90N 071-32.57E	PARAGON L-786	19-29.88N 071-24.70E	PARAGON M 1161	18-54.75N 071-49.57E	RON TAPMEYAR	18-47.47N 071-59.99E	SAGAR GAURAV	19-07.88N 070-58.50E	SAGAR SHAKTI	19-39.70N 071-04.71E	SAGAR JYOTI	19-25.14N 071-15.83E	SAGAR KIRAN	18-44.50N 072-19.63E	SAGAR LAXMI	20-58.00N 071-33.00E	SAGAR PRAGATI	20-58.00N 071-33.00E	SAGAR UDAY	19-07.35N 072-06.45E
ABAN ICE	18-55.01N 070-18.95E																																																						
ABAN III	19-22.07N 071-26.07E																																																						
ABAN IV	19-29.79N 071-19.83E																																																						
CE THORNTON	19-40.10N 072-18.89E																																																						
DISCOVERY-1	19-12.50N 072-02.24E																																																						
DYNAMIC VISION	18-39.23N 070-58.86E																																																						
DEEP SEA FORTUNE	19-40.14N 072-00.34E																																																						
DEEP SEA FOSSIL	19-14.25N 072-06.46E																																																						
FG MCCLINTOCK	18-58.31N 071-29.99E																																																						
GREAT DRILL CHAAYA	18-40.10N 072-13.59E																																																						
GREAT DRILL CHETNA	21-37.38N 068-26.55E																																																						
GREAT DRILL CHAARU	18-59.30N 072-16.58E																																																						
HARVEY H WARD	19-32.84N 071-22.80E																																																						
JINDAL STAR	18-36.20N 072-13.99E																																																						
JT ANGEL	22-36.89N 068-26.06E																																																						
MERCURY FOCUS	21-18.12N 072-31.64E																																																						
NOBLE ED HOLT	19-01.90N 071-32.57E																																																						
PARAGON L-786	19-29.88N 071-24.70E																																																						
PARAGON M 1161	18-54.75N 071-49.57E																																																						
RON TAPMEYAR	18-47.47N 071-59.99E																																																						
SAGAR GAURAV	19-07.88N 070-58.50E																																																						
SAGAR SHAKTI	19-39.70N 071-04.71E																																																						
SAGAR JYOTI	19-25.14N 071-15.83E																																																						
SAGAR KIRAN	18-44.50N 072-19.63E																																																						
SAGAR LAXMI	20-58.00N 071-33.00E																																																						
SAGAR PRAGATI	20-58.00N 071-33.00E																																																						
SAGAR UDAY	19-07.35N 072-06.45E																																																						

887. Continued.	
TRIDENT XII	19-25.23N 071-16.99E
VICTORY DRILLER	18-31.95N 072-15.23E
VIRTUE-I	18-58.44N 071-37.44E
VALIANT DRILLER	19-38.88N 071-21.03E
2.	Wide berth requested.
888. India West Coast – Arabian Sea.	Charts 22 INT 71. Missile firing scheduled from 281430 – 301430 UTC Dec 15 in area bounded by 16-38.00N 071-32.00E, 17-49.18N 069-38.00E, 16-00.40N 068-23.68E, 14-49.23N 070-16.53E.
2.	Safe flying Ht 24 KM.
3.	Cancel this MSG 301530 UTC Dec 15.
889. India East Coast – SE off Kakinada.	Charts 31 32 INT 706. Firing by Naval ships scheduled on 28 Dec from 0130 – 1130 UTC Dec 15 in area bounded by 15-30N 083-24E, 16-14N 084-00E, 15-34N 084-46E, 15-08N 084-24E.
2.	Safe flying Ht 8 KM.
3.	Cancel this MSG 281230 UTC Dec 15.
890. India West Coast – Gulf of Khambhat.	Charts 21 209 210 254 292 INT 71. Firing by CG aircraft scheduled on 29 Dec from 0130-1130 UTC Dec 15 in area bounded by 20-18.5N 072-02.5E, 20-18.5N 072-15.0E, 20-09.5N 072-12.0E, 20-09.5N 072-00.0E.
2.	Safe flying Ht 1.6 KM.
3.	Cancel this MSG 291230 UTC Dec 15.
891. NAVAREA VIII Warnings in Force as on 23 Dec 15.	
2015 series	– 124 287 288 298 334 386 408 439 445 486 498 514 556 565 567 573 582 616 633 635 644 646 672 706 708 720 728 729 735 737 768 770 787 793 811 812 824 828 829 847 848 849 851 854 857 866 870 871 873 876 879 880 882 883 884 885 886 887 888 889 890
(a)	NAVAREA VIII warnings less than 42 days promulgated via SafetyNet.
(b)	Text of NAVAREA VIII warnings in force including those which no longer broadcast available on www.hydrobharat.gov.in .
(c)	Cancel this MSG 011000 UTC Jan 16.
892. India West Coast – Gulf of Khambhat.	Charts 21 INT 71. SV Surat progressing survey till 20 Jan 16 in area 21-13.06N 072-27.31E, 21-13.15N 072-35.75E, 21-01.46N 072-38.83E, 21-01.43N 072-36.31E.
2.	Wide berth around vessel requested.
893. India West Coast - off Murud-Janjira Hr.	Charts 21 256 293 INT 71. MSV Sarojini reported sunk due flooding in position 18-18.11N 072-47.35E. All crew rescued.
894. India West Coast – off Hazira.	Charts 209 292 INT 71. Unlit dead vessel Bulk Rose reported lying at anchor 20-53.39N 072-37.54E.
895. India West Coast – Safety Fairway off Mumbai.	Charts 21 211 INT 71. Fishing boat AVE Mariya reported partially capsized in position 19-13N 072-28E after colliding with tug.
2.	Vessels transiting to exercise caution.
896. India West Coast – Kochi.	Charts 22 32 220 259 260 2004 INT 71. Firing by Naval coast battery scheduled on
Date	Time (UTC)
01 Jan 16	0900-1200
05 Jan	0900-1200
08 Jan	0900-1200 and 1230-1430
12 Jan	0900-1200
15 Jan	0900-1200
19 Jan	0900-1200 and 1230-1430
22 Jan	0900-1200
29 Jan	0900-1200
2.	Firing area bounded by 09-57.5N 075-59.5E, 09-57.7N 076-14.2E, 09-44.0N 076-17.5E, 09-42.5N 076-09.5E. Safe flying Ht 10 KM.
3.	Cancel this MSG 291300 UTC Jan 16.
897. Cancel NAVAREA VIII 887. India West Coast.	Charts 21 22 293 INT 71. Rig list correct at 301000 UTC Dec 15
ABAN ICE	18-55.01N 070-18.95E
ABAN III	19-10.61N 070-57.71E NEW
ABAN IV	19-29.79N 071-19.83E
CE THORNTON	19-40.10N 072-18.89E
DISCOVERY-1	19-12.50N 072-02.24E
DYNAMIC VISION	18-39.23N 070-58.86E
DEEP SEA FORTUNE	19-40.14N 072-00.34E
DEEP SEA FOSSIL	19-14.25N 072-06.46E
FG MCCLINTOCK	18-58.31N 071-29.99E
GREAT DRILL CHAAYA	18-40.10N 072-13.59E
GREAT DRILL CHETNA	21-37.38N 068-26.55E

897.	Continued.	
	GREAT DRILL CHITRA	19-18.10N 072-02.43E NEW
	GREAT DRILL CHAARU	18-59.30N 072-16.58E
	HARVEY H WARD	19-32.84N 071-22.80E
	JINDAL STAR	19-15.26N 071-21.90E NEW
	JT ANGEL	22-36.89N 068-26.06E
	MERCURY FOCUS	21-18.12N 072-31.64E
	NOBLE ED HOLT	19-01.90N 071-32.57E
	PARAGON L-786	19-29.88N 071-24.70E
	PARAGON M 1161	18-54.75N 071-49.57E
	RON TAPMEYAR	18-47.47N 071-59.99E
	SAGAR GAURAV	19-07.88N 070-58.50E
	SAGAR SHAKTI	19-39.70N 071-04.71E
	SAGAR JYOTI	19-25.14N 071-15.83E
	SAGAR KIRAN	18-44.50N 072-19.63E
	SAGAR LAXMI	20-58.00N 071-33.00E
	SAGAR PRAGATI	20-58.00N 071-33.00E
	SAGAR UDAY	19-07.35N 072-06.45E
	TRIDENT XII	19-25.23N 071-16.99E
	VICTORY DRILLER	18-31.95N 072-15.23E
	VIRTUE-I	18-58.44N 071-37.44E
	VALIANT DRILLER	19-38.88N 071-21.03E
2.	Wide berth requested.	
898.	Cancel NAVAREA VIII 565/15 879 and this MSG.	
899.	India West Coast – off Mumbai. Chart 21 255 INT 71. MV Kamrup progressing seabed survey from 01 Jan to 31 Jan 16 in area bounded by 19-42N 070-56E, 19-39N 071-34E, 19-02N 071-33E, 19-05N 070-56E.	
2.	Wide berth around vessels requested.	
3.	Cancel this MSG 311830 UTC Jan 16.	
900.	India West Coast – off Mumbai. Chart 21 255 INT 71. MV Flamboyant will progress seabed survey from 01 Jan 16 to 31 Jan in area bounded by 19-42.6N 070-56.5E, 19-39.6N 071-34.6E, 19-02.3N 071-33.8E, 19-05.7N 070-56.1E and 01 KM on either side of lines joining 18-47.6N 072-40.9E, 18-57.4N 072-31.8E, 19-18.1N 071-59.0E, 19-24.5N 071-33.7E and 18-45.9N 072-43.9E, 18-35.4N 072-12.7E, 19-15.9N 071-17.2E.	
2.	Wide berth around vessels requested.	
3.	Cancel this MSG 311830 UTC Jan 16.	
901.	Bay of Bengal – Myanmar Waters. Charts 31 INT 706. SV Polarcus Amani will undertake seismic survey from 01 Jan to 30 Apr 16 in area bounded by 18-04.63N 090-29.18E, 19-02.32N 091-09.58E, 19-02.42N 091-20.35E, 18-59.75N 091-19.82E, 19-00.08N, 092-08.87E, 18-27.82N 092-08.87E, 18-15.38N 092-00.03E, 18-15.06N 091-17.42E, 18-05.10N 091-10.42E.	
2.	Wide berth around vessel requested.	
3.	Cancel this MSG 301830 UTC Apr 16.	
902.	India West Coast – Gulf of Kachchh. Chart 203 INT 71. Salaya channel marking buoy Mithapur (22-25.10N 068-51.89E) and VLCC (22-35.85N 069-17.45E) retrieved.	
903.	Cancel NAVAREA VIII 768/15 and 895/15 and this MSG.	

SECTION – VI
CORRECTIONS TO SAILING DIRECTIONS (PILOTS)

NIL

SECTION – VII

CORRECTIONS TO LIST OF LIGHTS

No	Name & Location	Position (Lat-Long)	Characteristics	Ht. mts	Range miles	Structure & Height (mts)	Remarks
F0669.5	Kotte Kunnu. Mount Dilli	12 00.43 N 75 12.12 E	Fl(2)W 20s	62	22	White 6-sided tower, red bands 18	
--	--	..	Racon	ILRS Vol 2 Station 79045 TD 2015
--	--	..	AIS	MMSI No 004192241 *
F0952	- Krishnapatnam	14 17.14 N 80 08.27 E	Fl(3)W 15s	34	18	White hexagonal RCC tower, black bands 30	(fl 0-5, ec 2) x 2, fl 0-5, ec 9-5
--	--	..	Racon	ILRS Vol 2 Station 79160 TD 2015
--	--	..	AIS	MMSI No 004194428 *
F1584	- Batuan Penyu	03 13.80 N 101 12.71 E	Fl(2)W 5s	6	10	White column on piles	Range 6M (T) 2015
--	--	..	Racon	ILRS Vol 2 Station 79840 TD 2015 *
F9350	KARNAPHULI RIVER - Sandwip Channel. Sangu 1 ---	22 00.94 N 91 31.47 E ..	Mo(U)W 15s Horn Mo(U) 30s	Platform ..	Reported Unreliable (P) 2015 Reported Unreliable (P) 2015 *

SECTION – VIII
CORRECTION TO LIST OF RADIO SIGNALS

INP 31(1), 2014

(Last correction: Edition No. 16 dated 16Aug 2015)

NIL

INP 31(2), 2014

(Last correction: Edition No. 22 dated 16 Nov 2015)

NIL

INP 31(5), 2011

(Last correction: Edition No. 16 dated 16 Aug2015)

NIL

INP 31(6), 2012

(Last correction: Edition No. 21 dated 01 Nov 2015)

NIL

SECTION – IX

REPORTING OF NAVIGATIONAL DANGERS

Appeal to all Mariners

1. Mariners at sea whilst on passage, or whilst entering / leaving ports / harbours and other waterways, are requested to look out for new or suspected dangers to navigation, changes in aids to navigation, or corrections to published charts and Sailing Directions. Whenever any such changes / dangers are observed, mariners are requested to notify the same to the Chief Hydrographer to the Government of India at the following address: -

National Hydrographic Office
107-A, Rajpur Road,
Dehradun - 248001
(UTTARAKHAND), INDIA
e-mail: - inho-navy@nic.in, msis-inho-navy@nic.in
Fax No.: +91-135- 2748373
WEB: www.hydrobharat.gov.in

Instructions for filling up IH 102

2. Kindly follow the instructions below in order to help the Hydrographic Office (the recipient) to quickly issue NAVAREA warning / Notice to Mariners for the benefit of all other mariners at sea.

Position Reporting

3. Accurate position or knowledge of position error is of great importance. Latitude and Longitude should only be used to specify position details when they have been fixed by GPS or Astronomical Observations. A full description of the method, equipment, time and datum (WGS 84/ Everest/ Other) used should be given. When position is defined by sextant angles or bearings (true or magnetic to be specified), more than two bearings should be used in order to provide a redundancy check. Distances observed by Radar should be corrected for index errors. Where position is derived after the event, from other observations and/or Dead Reckoning, the methodology of deriving the position should be included.

4. Paper Charts. A copy/tracing of largest scale chart is the best medium for forwarding details, the alterations and additions being shown thereon in red, but adequate details from the chart must be traced in black ink to enable the amendments to be fitted correctly.

5. ENCs. A Screen shot of largest scale usage band ENC with the alterations and additions being shown thereon in red. If it is to report an issue with the display of an ENC, a screen shot of the affected cell should be sent along with details of the ECDIS make and version in use at the time.

Depth Reporting

6. When soundings are obtained using echo sounders, the echo sounding trace should be duly annotated with date, times, position, depths, etc., and forwarded with the IH102. It is important to state whether the echo sounder is set to register depths below the surface or below the keel; in the latter case the vessel's draught should be given. Time and date should be given in order that corrections for the height of the tide may be made where necessary. The make, name and type of echo sounder should also be given.

7. For modern echo sounders that use electronic 'range gating', care should be taken that the correct range scale and appropriate gate width are in use. Older electro-mechanical echo sounders frequently record signals from echoes received back after one or more rotations of the stylus have been completed. Thus with a set whose maximum range is 500m, an echo recorded at 50m may be from depths of 50m, 550m or even 1050m. Soundings recorded beyond the set's nominal range can usually be recognised by the following:

- (a) the trace being weaker than normal for the depth recorded;
- (b) the trace passing through the transmission line;
- (c) the feathery nature of the trace.

As a check that apparently shoal soundings are not due to echoes received beyond the set's nominal range, soundings should be continued until reasonable agreement with charted soundings is reached. However, soundings received after one or more rotations of the stylus can still be useful and should be submitted if they show significant differences from the charted depths. Efforts should be made to identify and negate false echoes if any. The Mariners Handbook (NP100) and Notice 15 Special Edition of Notice to Mariners may be consulted.

8. Reports which cannot be confirmed or are lacking in certain details should not be withheld. Shortcomings should be stressed and any firm expectation of being able to check the information on a succeeding voyage should be notified.

9. Reports of **shoal soundings**, uncharted dangers and aids to navigation out of order should, at the mariner's discretion, also be made by radio to the nearest coast radio station. The draught of modern tankers in such that any uncharted depth under 30 meters or 15 fathoms may be of sufficient importance to justify a radio message.

10. Changes to Port information should be forwarded on Form IH.102A together with form IH.102. Form 102 A contains the information required for Sailing Directions and should be used as an *aide memoir*. The Mariners Handbook, NP100, Chapter 8 gives general instructions. Where there is insufficient space on the forms an additional sheet should be used.

Please Note: - An acknowledgement will be sent by National Hydrographic Office for Hydrographic Notes received. When a Notice to Mariners is issued, the sender's ship or name is quoted as authority unless the information is also received from other authorities/foreign Notices to Mariners. Further communication from National Hydrographic Office to the sender of Hydrographic Notes will only be necessary to verify unusual features or abnormal values reported.

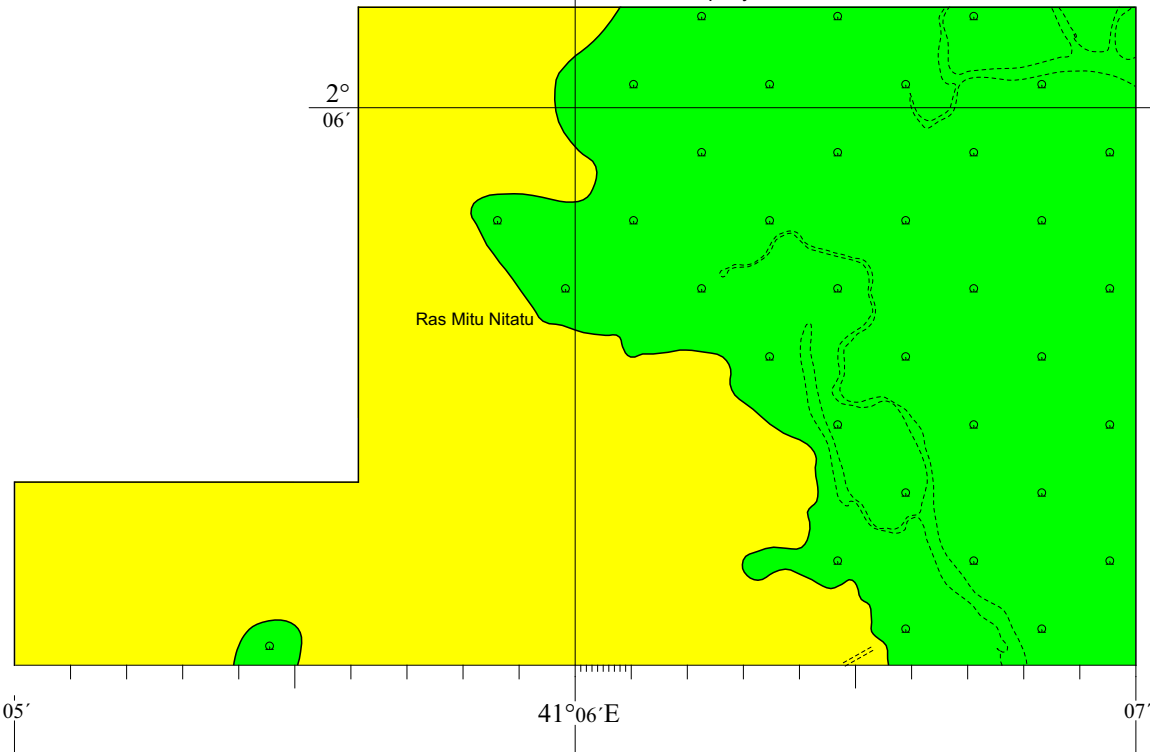


HYDROGRAPHIC NOTE				IH.102 (Revised 2012)	
For Forwarding information for Indian Charts, ENC's and Publications and reporting of ENC related issues					
Date			Ref. Number		
Name of the Ship or Sender					
Address					
Tel/FAX/E-mail address					
Observation Date			Time (UTC/IST)		
Object of Changes Observed (Tick appropriate)	<input type="checkbox"/> Bathymetry	<input type="checkbox"/> Nav. Dangers	<input type="checkbox"/> Nav. aids		
	<input type="checkbox"/> Designated Areas		<input type="checkbox"/> Others		
Geographical Position (See Instructions Overleaf)	Latitude			Longitude	
Position Method	<input type="checkbox"/> DGPS	<input type="checkbox"/> GPS	<input type="checkbox"/> Radar	<input type="checkbox"/> Others	
Datum Used	<input type="checkbox"/> WGS84	<input type="checkbox"/> Everest	<input type="checkbox"/> Others		
Charts Affected				Edition	
Latest Edition of Indian Notices to Mariners Held					
Tracing/Plot/Photograph if enclosed					
ENCs Affected					
Latest Update Disk Held					
Publication Affected				Edition	
Page No./Light No. etc					
Details:					
Limitations if any in Reporting the Changes Above					
Details of Documents/Photos attached:					
Signature of the Master/Reporter/Observer					

HYDROGRAPHIC NOTE FOR PORT INFORMATION (To accompany Form IH.102)				IH.102A (Revised 2012)	
Date				Ref. No.	
Name of the Ship or Sender					
Address					
Tel/Fax/E-mail					
1. NAME OF PORT					
Location		Latitude		Longitude	
2. GENERAL REMARKS					
Principal activities and trade					
Number of ships and tonnage handled per year					
Maximum size of draught of vessel handled					
Copy of Port handbook (if available)					
3. ANCHORAGES					
Type / Purpose					
Minimum depth at anchorage					
Shelter afforded					
Holding ground					
Recommended pilotage to the anchorage					
4. PILOTAGE					
Authority for request					
Embarkation position					
Regulations					
Documents to be provided					
Recommended pilotage to approach of Harbour and Berths					
Information on VTMS					
5. DIRECTIONS					
Entry and Berthing Information					
Tides (Height)					
Tidal Stream Information					
Wind Speed and Direction					
Navigational Aids (Beacons / Buoys / Lights / Etc.)					
6. POLLUTION CONTROL					
Local regulation in force (If Any)					
7. TUGS					
Number available / Tug type					
Maximum HP / Bollard pull					

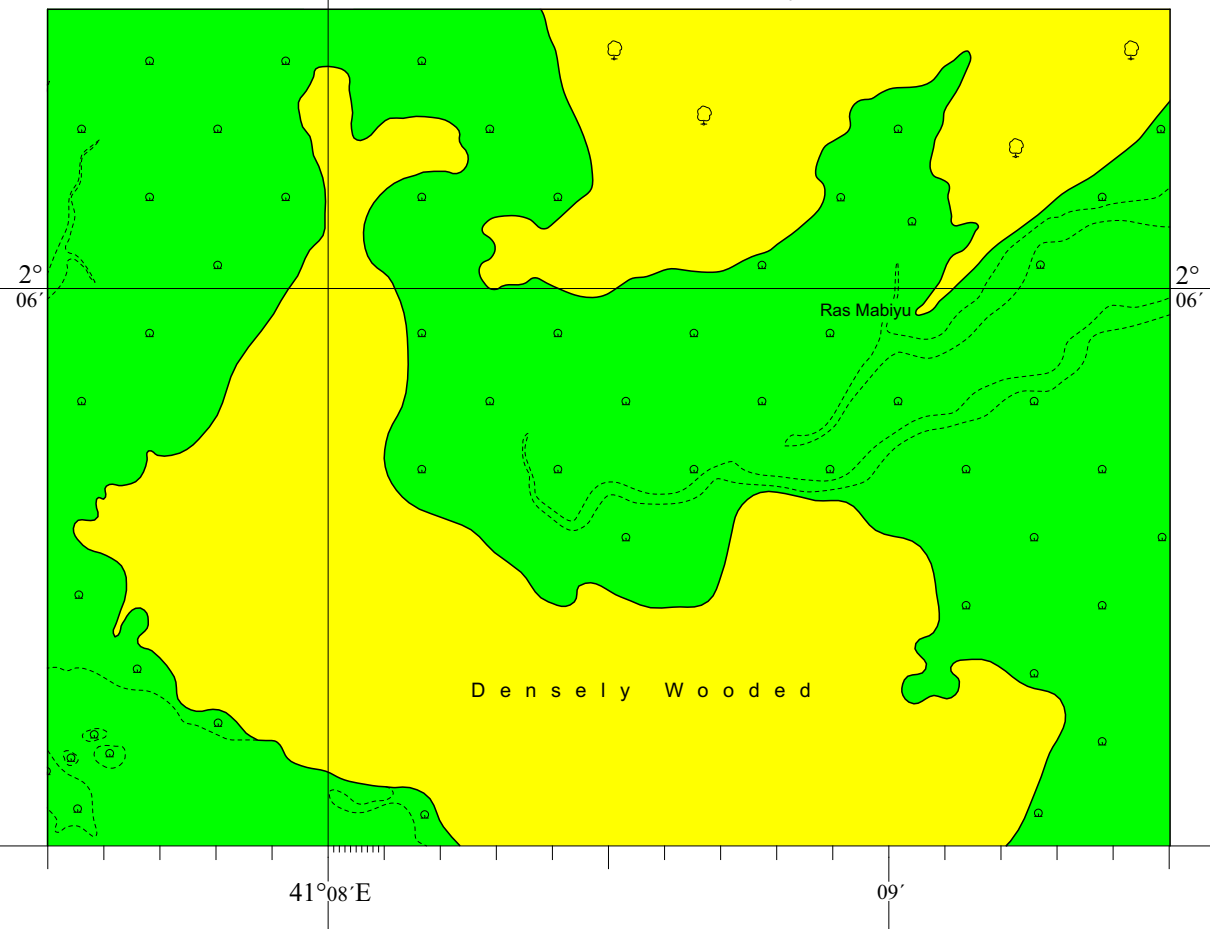
7. TUGS (Continued)	
Requesting authority	
Availability timing / Communication	
Hiring charges	
8. BERTHING AND WHARVES	
Type & Number of berths available	
Length	
Depth alongside	
Facilities available	
Procedure for requesting berth & hiring charges	
9. CARGO HANDLING	
Containers	
Lighters & Ro-Ro etc.	
10. CRANES	
Brief details of Max. lifting capacity, Height of boom at wharf level and Outreach	
Container handling facilities	
11. BRIDGES	
Vertical clearance	
12. REPAIRS	
Hull machinery and underwater	
Ship and Boat yards	
Docking or Slipway facilities (Size/ Dimensions of vessels handled)	
Hards and Ramps	
Divers / Diving assistance	
13. SERVICES	
Radio / FAX / Telephone / Internet etc.	
Medical	
Quarantine	
Consul	
Ship chandlery and Stevedores	
Compass adjustment	
Tank cleaning	
Hull painting	
Police / Ambulance / Firefighting (Fixed and Mobile facilities)	
Nav. Warning and Weather bulletin	
Garbage disposal / Waste oil disposal	
Helicopter landing facilities	

14. RESCUE & DISTRESS	
Salvage, Lifeboat, Life guards, etc	
15. SUPPLIES	
Fuel (Type, Quantities & Method of delivery)	
Fresh water (Method of delivery and Rate of supply)	
Provisions	
Chart agents	
16. COMMUNICATIONS	
Road, Rail and Air services available	
Nearest airport or airfield	
Port Radio and Information Service (Frequencies and Operating Hours)	
17. PORT AUTHORITY	
Designation, Address, Telephone, E-mail Address and Website	
18. SECURITY	
Security of ports / International Ship and Port Facility Security (ISPS) compliance	
Custom and Immigration Regulations in force	
19. SMALL CRAFT FACILITIES	
Information and facilities for small craft, yachts visiting the port	
Yacht clubs, berths etc	
20. SHORT LEAVE	
21. CLUBS RECREATION	
Information Kiosk (Location)	
Foreign Exchange firms / Banks (Within / Near Port Area)	
Places of interest near port	
22. VIEWS	
Photographs(Duly annotated) of the approaches, leading marks, the entrance to the harbour etc.	
23. ADDITIONAL DETAILS	
Any other information considered to be useful for the mariners	
SIGNATURE OF THE OBSERVER / REPORTER / MASTER	



41°08'

To accompany Indian Notices to Mariners No. 032/2016



Block Correction for chart No 2519



FOR 24 X 7 SAR ASSISTANCE IN INDIAN SRR

Email: indsar@vsnl.net

NATION WIDE SAR TELE: 1554 (LAND LINE)

INMARSAT C (IOR) 441907210 CODE: 43 (TOLL FREE)

AFTN: VABBYXYC